

THE ELEVENHUNDRED



CONTENTS

Page. 02

LOGLINE – PG 3

THE WORLD – PG 4

THE STORY – PG 5

THEME & SOCIAL RELEVANCE – PG 6

CHARACTERS – PG 7 –11

TONE & STYLE – PG 12-15

WHY ME? – PG 16

EPISODE STRUCTURE – PG 17

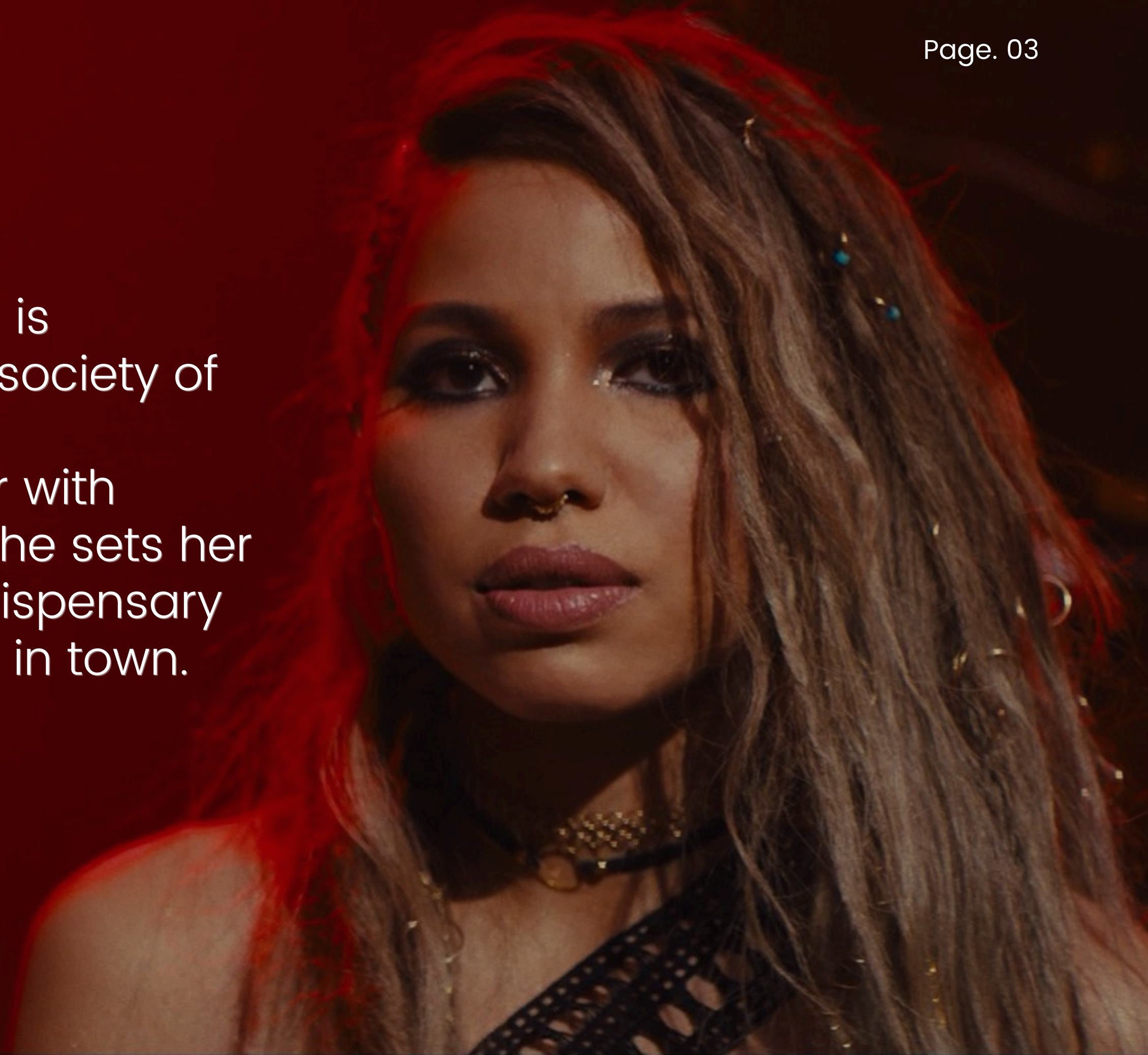
PILOT EPISODE – PG 18 – 19

FUTURE EPISODES & ARCS – PG 20

CONTACT INFO – PG 21

LOGLINE

A cunning strip club owner, who is bankrolling a subversive secret society of woman plotting to infiltrate the government, gets into a turf war with greedy rich land barons when she sets her sights on opening a cannabis dispensary on the most sacred plot of land in town.



THE WORLD

Page. 04

The Eleven Hundred is an hour-long crime thriller that takes place in a small town with big city energy. The setting is present day Pontiac, Michigan – forty miles North of Detroit and twenty miles south of the smallest Native American Reservation in Michigan. The town is named eponymously for a Native American War Chief who was cheated out of the land by European settlers. His ancestors still call the town home. It was home to Elizabeth Denison, the first free Black Woman to purchase land in Michigan and home to the Lomax twins, real estate moguls whose ancestors were the ones who appropriated the land from Chief Pontiac.

The city is in the middle of a rebirth after a political scandal left it millions of dollars in debt. In order to save it from financial ruins, City Council reluctantly voted to legalize the recreational use of cannabis. Aside from this one digression the state has become more right leaning in its politics sparking the formation of several antigovernment groups. The most powerful being the N2s, a secret society of black women strategizing to infiltrate and overtake the government. Think **JOHN WICK** meets **THE AGENCY**.

It is here, where land ownership, politics and legacy matters, that **JADE DENISON**, 30s, the show's protagonist, reside. She is a take no prisoners kind of woman. Admired by her peers and more than a little feared by her enemies. She is the owner of the Sanctuary, a highly successful strip club that is frequented by ballers and politicians alike. The multi-level club is larger than it looks at first glance and a bit classier than you would expect. Having been born and raised in Pontiac Jade is well known in the community. Her family history boasts a pedigree of doctors, scholars and men of the cloth. Their name used to mean something. That is until she sullied it by becoming a stripper and then a strip club owner – profiting off the flesh trade as the elders like to say.

Jade is also a founding member and de facto leader of the N2s, albeit reluctant leader. Funding their mission is the real goal behind the club and the dispensary. There are eleven hundred members working in concert: lawyers, artists, doctors, politicians and journeywoman. The members meet in an opulent bunker located under The Sanctuary in what use to be a stop on the underground railroad. The N2s are a non violent organization, however, some of the younger members think its time for a more militant approach.

Jade is ambivalent on that issue BUT she understands the assignment and is prepared to see it succeed by any means necessary.

THE STORY

Page. 05

JADE is trying to keep it together. Running the strip club, opening the dispensary, laundering money for the N2s and a few other borderline legal activities. A natural brooder yes, but she seems to be in the midst of an uncharacteristic moment of crisis. A problematic boyfriend that she may only be keeping around for the kink and recurring nightmares that have something to do with her past have compelled her to reach out to her former best friend – an ex stripper who is now a devout Jehovah's Witness.

The drama began a month ago when the city council president, who was also the N2s man on the inside, turned up dead. It was common knowledge that he frequented the club. Most in the community suspect Jade is involved. And they are right. She didn't do the killing but it happened in her club and she covered it up. And now, gunning for a promotion or simply some respect, LENNIE, 35, hapless sheriff and strip club barfly – though let him tell it he's only here for the chicken – has teamed up with disgruntled resident and rabble-rousing reporter JAKE PONTIAC, 30, to investigate the death. Then there's the LOMAX TWINS, 40s, they own a competing dispensary but their main goal is to repatriate that coveted piece of land that Jade owns, also home to the N2s.

Unfortunately for Jade, the new city council president replacing their inside man, is none other than her nemesis, MABLE, 60s, respected community figurehead and widow to the city's spiritual leader. Mable covets the power her new position wields and makes it clear that her allegiances are transactional. She is staunchly against the legalization of cannabis and sees it as her mission to repeal the law. Yeah, she's a real problem.

Oh, and she just happens to be Jade's Mother.

THEMES & SOCIAL RELEVANCE

Several themes will be explored over the course of the series. Many in the current zeitgeist. We want our show to be escapist entertainment with the themes woven through the show as metaphors, backstory or subtext.

- Importance of Legacy
- Entrepreneurial spirit
- Female empowerment
- Power and corruption
- class struggles
- land ownership
- Family Drama
- Win at all cost even if you have to lie and cheat
- Cult like leaders and study of political power
- Morally questionable beliefs
- The clash between conservatism and liberalism
- Inequities in the cannabis industry
- Attitude of burning something down to rebuild it

CHARACTERS

JADE (36)

JADE is the owner of The Sanctuary. Fiercely independent, she left home at a young age hoping to escape her overbearing mother and started her career as a dancer – possibly as a fuck you to her. While her mother all but disowned her, Jade's father was surprisingly supportive.

She was always a daddy's girl and despite him being a pastor he accepted his daughter unconditionally. After a few wild years, Jade stopped dancing and opened The Sanctuary. But Jade is meant for more and she knows it. The political climate spurred her to act so she helped form the N2s.

As a descendant of Elizabeth Denison, a beloved matriarch and social activist in Pontiac, Jade is determined to live up to her lineage but she also has demons from her past that she has yet to contend with.



CHARACTERS

MABLE (60)

MABLE - Jade's mother is the epitome of a religious zealot. Unfortunately, she's more sanctimonious than pious. She has resented Jade from birth. The kind of mother that guilt trips her children because of the stretch marks left by her pregnancy.

The close bond that Jade shared with her father only intensified the rivalry. Mable is responsible for the conservative changes taking place in the city and is hell bent on shutting down legalized cannabis.

But don't let that conservative smile fool you, she's also a black woman and isn't onboard with everything happening in the state. She's aware of the rumors about the N2s but her allegiance is to self.



CHARACTERS

LENNIE JAMES (36)

Page. 9

LENNIE JAMES – Hapless cop that spends his lunch breaks at The Sanctuary. He grew up in this town and everyone knows him as the boy who lost the big football game. He is aware of the illegal shenanigans and goings on down at the club but as long as he doesn't see it (and maybe even if he does), he won't intervene. No one takes him seriously.

But something about the council president's disappearance arouses his suspicion enough that he decides to do something totally out of character – investigate.



CHARACTERS

JAKE PONTIAC (30)

Page. 10

JAKE PONTIAC – Native American reporter and overall pain in the ass. Jake lives on the reservation and takes pride in being a descendant of the man the town was named after. Feeling like he was cheated out of an inheritance, he sees it as his birthright to remind the locals that they're living on borrowed land – even if he knows it may never be reclaimed.

Through a series of circumstances, he teams up with Lennie to investigate the councilman's death and it's connection to unexplained activity on the reservation.



CHARACTERS

FORD & HENRY (40)

FORD & HENRY LOMAX (fraternal twins) – The Lomax family has their hands in everything from politics, banking to real estate. An old money dynasty, their ancestors were instrumental in forming Pontiac so many years ago. The brothers, FORD, handsome and charismatic, does all the deal making, HENRY smart and awkward, handles the books and acts as his brothers keeper.

They're interested in expanding into the nascent cannabis trade that has infiltrated Pontiac and are not very welcoming to competition. They also want to reclaim the very valuable piece of land that Jade owns. And they're not above playing dirty to get it.



tone & style

Page. 12

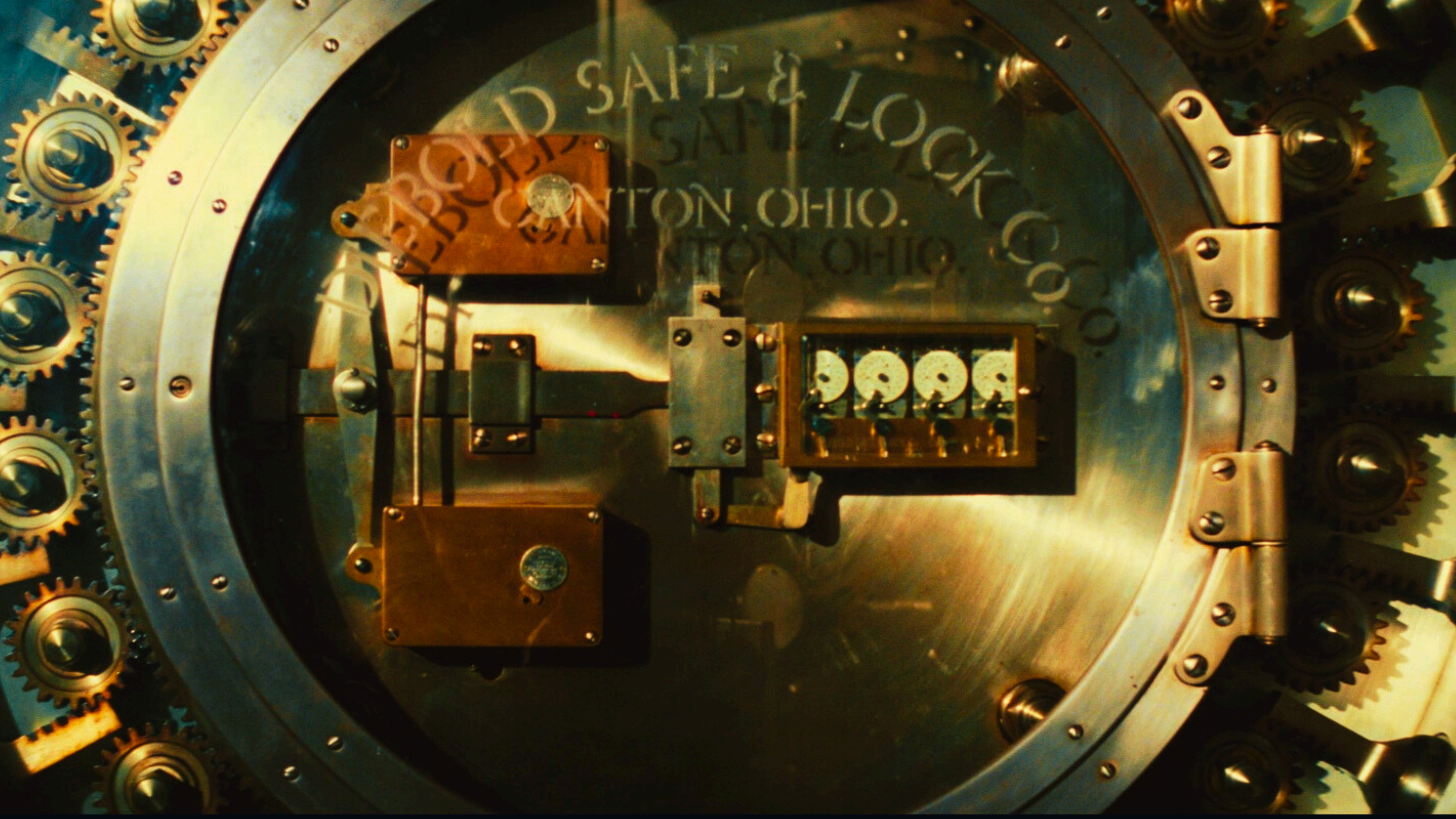
The tone of the series is a mix of criminal underworld, mystery and intrigue. It draws on the clandestine elements of John Wick and the political espionage and spy fiction of The Agency.

The insular small-town feel mixed with edgy humor work together to create a unique mise-en-scene. The strip club and secret hideout act as our main set pieces. Stylized and Sexy aesthetics, rich colors and dramatic mood lighting will be used to compliment the darker story lines and accentuate the sexier ones - edgy but not overly stagey.

The cinematography will be slow and deliberate. Static shots with interesting framing will allow the characters and action to be the main focus. The set and production design will be bold with lots of set dressing and hints of small-town quirkiness.







WHY I'M THE BEST MESSENGER

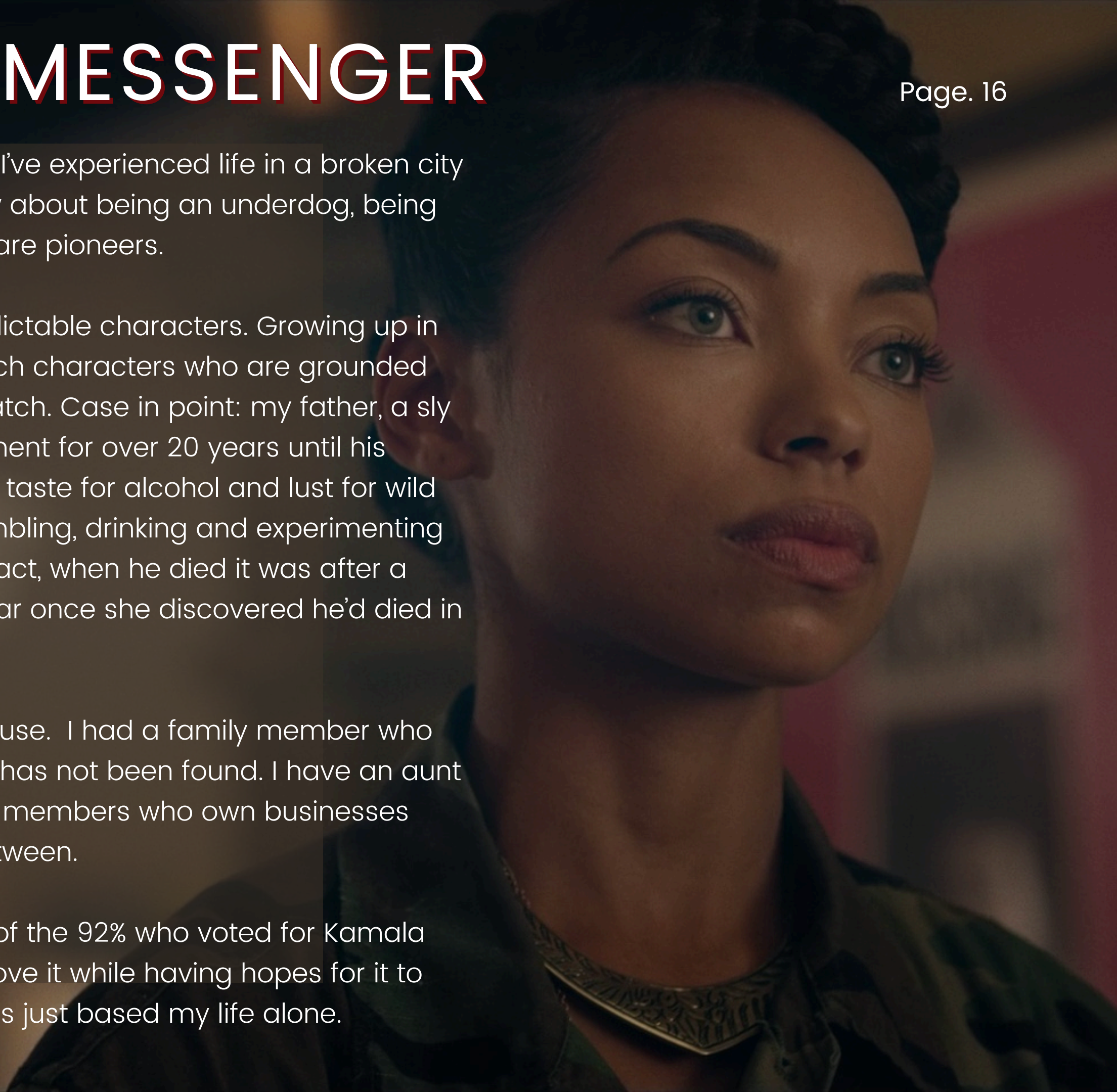
Page. 16

As someone who was born and raised in Detroit Michigan, I've experienced life in a broken city full of a rich history that is always on the comeback. I know about being an underdog, being dismissed and underestimated. Above it all Michiganders are pioneers.

I come from a big family full of vivid, engaging and unpredictable characters. Growing up in my family has provided me with the material to develop rich characters who are grounded but can also be menacing, relatable and compelling to watch. Case in point: my father, a sly charismatic ladies' man with quick wit was in law enforcement for over 20 years until his death. An extremely intelligent man who couldn't shake his taste for alcohol and lust for wild women – the looser the better. He spent his free time gambling, drinking and experimenting with drugs. Yes, he did this all while on the police force. In fact, when he died it was after a night of partying with a prostitute who promptly stole his car once she discovered he'd died in his sleep.

I had a cousin who ran a basement strip club out of his house. I had a family member who disappeared from a night club after her shift ended – she has not been found. I have an aunt who was killed and thrown out on a highway. I have family members who own businesses and property, who excelled in politics and everything in between.

I'm also a Black woman living in the United States. I'm one of the 92% who voted for Kamala Harris. This is my country as much as anyone else's and I love it while having hopes for it to live up to its potential. I can speak to many of these themes just based my life alone.



EPISODE STRUCTURE

Page. 17

Each episode opens with a 'flashforward' teaser giving a hint of the storyline for the episode and something for the audience to anticipate. Act One begins in present day. The transition between the two will be almost imperceptible. Gradually, little clues in set dressing, time or day and dialogue will begin to reveal the jump in time. By the beginning of the final act, the story will have caught up to the flashforward shown in the teaser as pieces of the storyline unfold.

Each episode will follow the successes and failures of the N2s journey toward dominance and radicalization, the investigation into the councilman's death and subsequent disappearance of a well known stripper and Jade's journey toward confronting her past.

PILOT EPISODE



The pilot begins in the strip club where we set up the cast of characters and meet JADE at work. We learn that she is wrestling with personal demons in the form of cryptic nightmares and we meet MACEO, her albatross of a boyfriend that she can't seem to shake. She meets with her former best friend also an ex-stripper. Their conversation adds another layer to the demons from Jades past. We meet, Mona Lisa, dancer with an abusive boyfriend leaving for the night. Jade convinces her to give the councilman a private lap dance and she watches on a security monitor. Not long after the dance gets underway gun shots ring out. Jade and Maceo run to the private room to find the councilman and Mona Lisa's boyfriend – who came out of nowhere – dead on the floor. No questions are asked. Jade goes into crisis mode and orders someone to get rid of the body.

On the other, more pious side of time, we're crammed in a small conference room with media and the mayor waiting to meet the newly appointed "liberal" – liberal because she's a lesbian – Chief of Police. She pledges to get the police and the community back on one accord. Her appointment by the right wing Governor caused consternation among all parties. JAKE wastes no time asking inappropriate questions and chiding the town folk. And, in an office further down the hall, the city council is meeting. There we meet MABLE, Jade's nemesis, also known as her mother, making a speech about how important it is to support her crusade against strip clubs and legalized cannabis – in essence – a crusade against Jade (my words not hers).

While shoring up the plans to make the secret hideout more accessible, Jade gets an unexpected visit from the LOMAX TWINS. They throw down the gauntlet and make an offer on her building. She makes it clear that it is not for sale. They make it emphatically clear that they won't take no for an answer. Adding to the mounting stress, LENNIE's long waning interest in police work is piqued when, while getting head in his police car, witnesses the disposal of the councilman's body. He doesn't know by who but decides to investigate without informing his office of what he witnessed. The investigation threatens to expose Jades involvement. It isn't until the end of the pilot that we meet the N2s when Jade enters their lair to inform them that , referring to the murder, the investigation and the Lomax Twins, the proverbial shit has hit the fan.

FUTURE EPISODES & ARCS

EPISODE TWO

We spend more time with the N2s and learn what the organization is up to and some of the key players. Jake and Lennie join forces to investigate the murders and Maceo inadvertently gives out some information about Jade's plans that will come back to haunt her and him.

SEASON ONE ARC

- The N2s decide they must bring Mable into the group if they want to succeed. Jade is against this but eventually relents. By the end of the season Mable is quickly edging Jade out as leader but clashes with the younger members puts the group in jeopardy.
- Jake discovers that the tribal leaders are doing shady business deals with the Lomax twins. They are growing marijuana, without tribal consent, and pocketing the money. Jake decides to run for a tribal position to have more leverage in the community.
- Lennie figures out that Jade is involved in the councilman's death but attempts to blackmail her don't go well when Maceo steps in. Lennie decides to wage war against them using his brothers in blue.
- Against Jades wishes, Mona Lisa, who was in hiding after killing the councilman and her boyfriend, comes back to town. She shows up at the club drunk and with a drug problem.
- The police chief succeeds in getting the town to like her but she's also harboring a secret when an ex from her past shows up looking for a job she's forced to hire her.
- Jade has been having nightmares that indicate she killed her father. She admits to her best friend that she indeed did kill her father. However, we find out that it was a mercy killing and that he begged her to do it. Mable found out but didn't try to stop it. She wasn't strong enough to do it herself but wasn't selfless enough to stop her daughter from doing it and dealing with the guilt. She's also jealous that the father asked Jade and not her. Jade realizes her mother knew and an argument insues. Jade exposes a secret of Mables' that she didn't know Jade knew and this threatens to destroy the entire N2 organization.

SEASON TWO

- The N2s back a candidate for Govern and this is largely the season. However, we pick up all the other storylines where they left off.

~~CONTACT INFO:~~

Phone	:917 637 9414
Email	:ncsproducer@gmail.com
Website	: www.nicolesylvesterfilms.com